

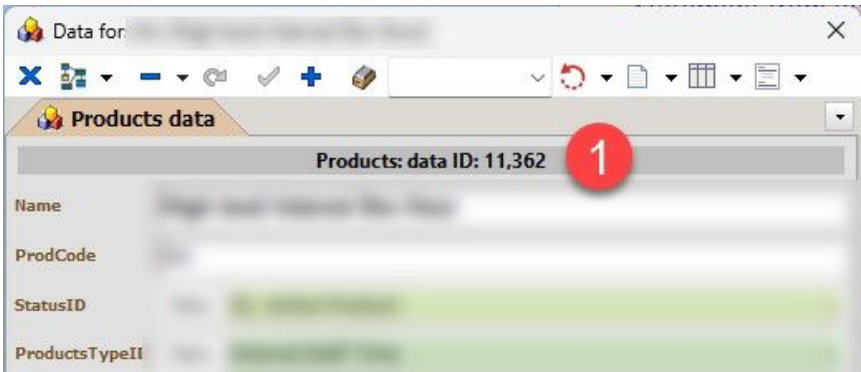
# How to Clone Products From FMSys into the EESys database

A new System Procedure has been added to EESys allowing users to "clone" Products who's details are present in the FMSys Orixas system and bring the data into EESys.

This is a one way process (for the time being). See note regarding issues related to this as the end of this document.

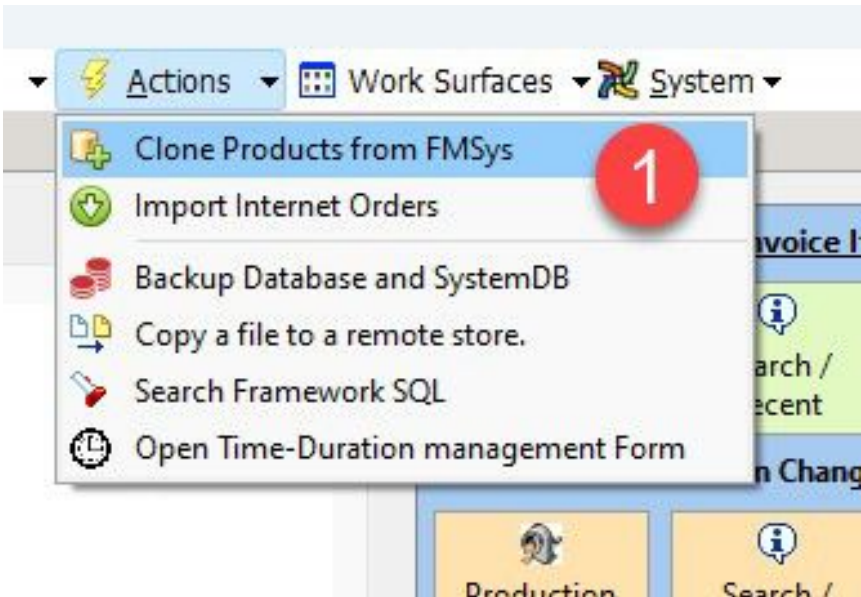
## Running the "Clone Products From FMSys" procedure

Before you run the procedure, the first step is to find the "IDs" of the product you wish to copy. This must be done in FMSys.



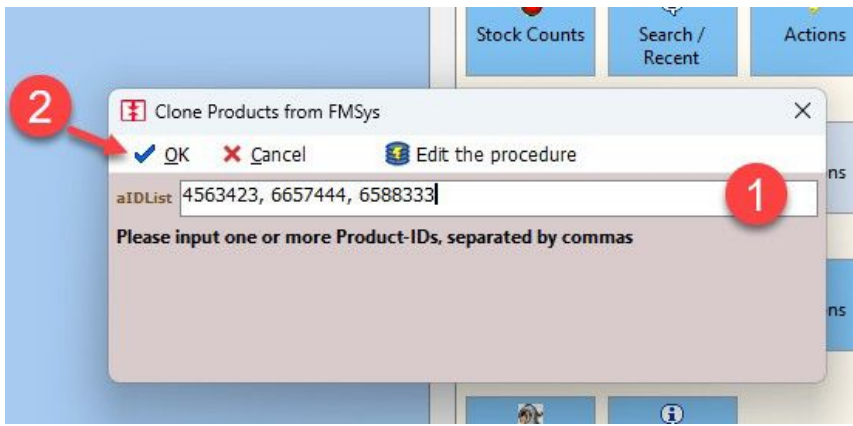
Product's "ID"

Open any product in FMSys and make a note of the ID. Note that if you right-click on the ID field you can copy the ID to the clip-board. If you want to copy more than one product, repeat this step, putting all the ID's into a comma-separated list.



Clone Products from FMSys

Once you have the ID's you need, open EESys. If the user has an adequate security level, the "Clone Products from FMSys" procedure will appear in the "Actions" menu, as shown at 1., in the image above.



Clone Products procedure: entering ID values

After clicking on "Clone Products from FMSys", the procedure-window shown above will open.

1. Enter the ID or IDs you want to Clone into the "aIDList" field.
2. Click OK.

## Notes about this process

What actually happens when the procedure runs is that parts of the data relating to a Product in FMSys are copied into EESys. The procedure does **not** copy all Product data, but only those parts which are generally used in EESys.

At present this is a one-way process, the data-synchronization processes which normally occur for EESys and FMSys where updates by one user can automatically be seen by everyone else **do not apply**. If an Imported product is updated or edited in EESys, this update will **not** be visible in FMSys and vice-versa. This should be borne in mind when using both systems.

Since EESys and FMSys use Products in different ways this should not be a big issue.

If there is a need for more thorough synchronization of data between the systems, this should be reviewed.

## Technical Details of how the Cloning process works

The FMSys and EESys Orixas systems each connect to separate database-sessions. These sessions manage record-locking, sharing and other complex data-actions. This means simple copying of data directly from the FMSys to EESys databases is not possible and could result in data corruption.

To enable Cloning data between EESys and FMSys, a **Replication Process** has been put in place. A copy of the FMSys database has been created within the EESys database-session. The Replication Process copies all updates to FMSys into the **copy database** within the EESys session. The copy database is not accessed by any other process, and so its data is available for cloning into the EESys database.

Note that there is a delay of about 20 minutes in the Replication Process, so newly added data in FMSys will not be available for cloning into EESys until the Replication process has occurred.